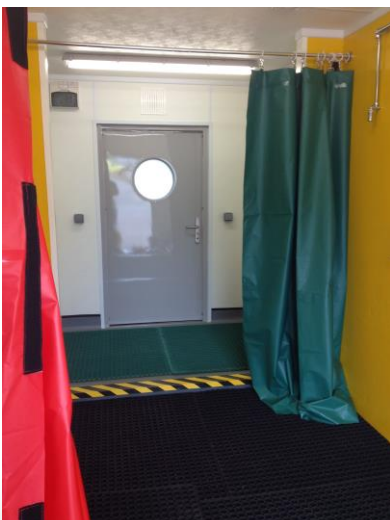


Summary

The Decontainer[®] is a Static Decontamination Container specifically designed for semi-permanent siting to provide near-instant decontamination capability. Incorporating speed of deploy, ease of use and minimal training requirements, the units are a truly cost effective alternative to traditional soft wall decontamination.

Features

- Divided into 3 compartments; disrobe/undress area, wet decontamination/shower area and re-robe/check area. All colour-coded to differentiate clean and dirty areas.
- Fully compliant with latest 18th Edition electrical regulations:
 - Sealed electric plant room with external access door
 - Sealed water plant room with external access door.
 - IP67 oil-fired radiators in dressing areas
 - Sealed IP67 internal lights
- A self-contained system including internal heating, lighting, ventilation
- Shower heads supply warm water for patient comfort via combi boiler (housed in plant room)
- A secure solution including patient alarms, lockable external doors and 360° external illumination
- Colour-coded curtains create private deployment lanes and modesty
- Non-ambulant patient friendly with wide access doors
- Fire-rated to 60 minutes with steel/fire-rated doors (curtains BS 5867: Part 2: 1980, Type B)
- Choice of RAL colour

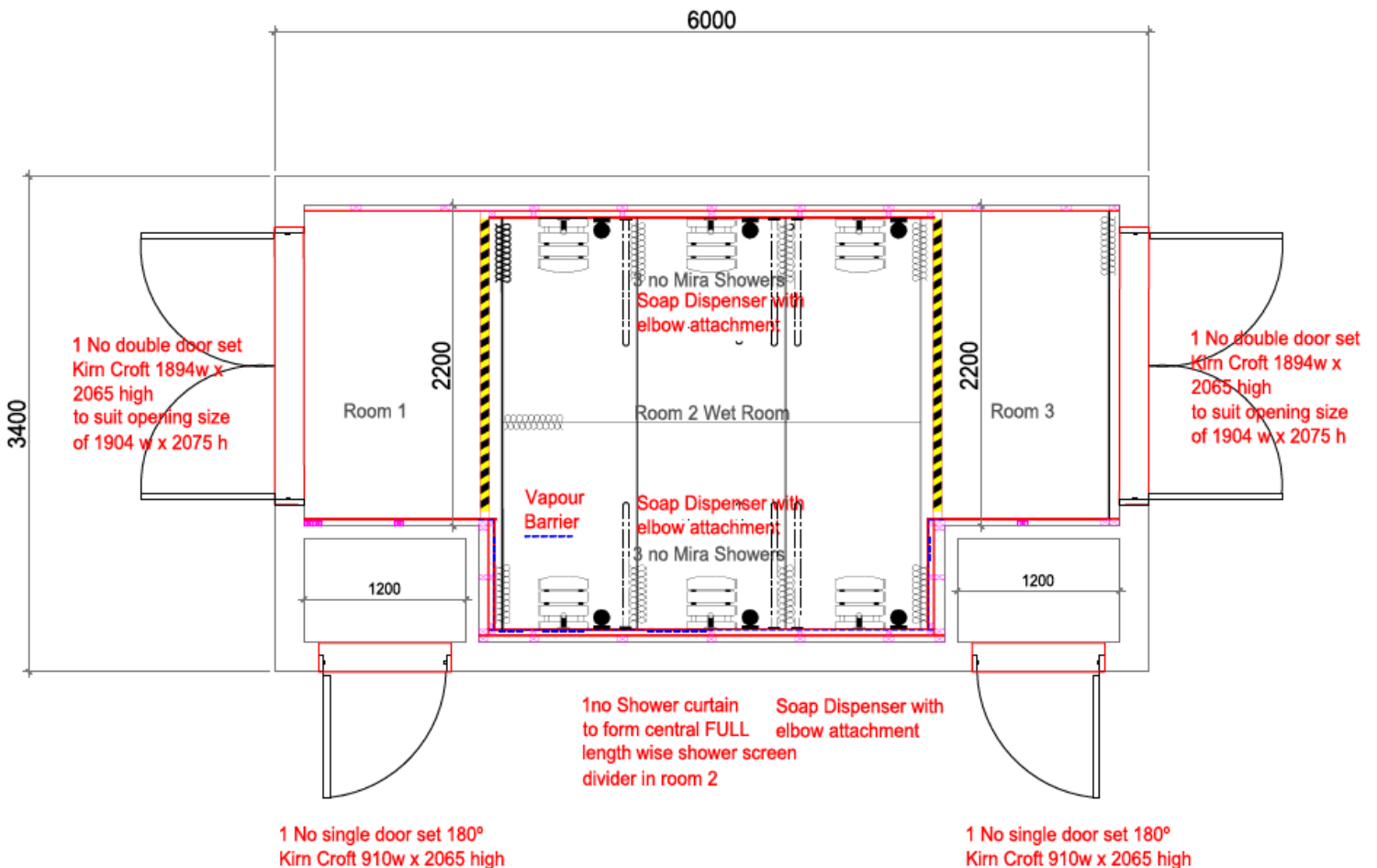


Decontainer[®] 20(DC20)



Critical Use Data

Dimensions: L 6m x W 3.4m x H 2.9m
Weight: 4 Tonnes
Operational Set Up: 1 person, 3 minutes



Decontainer[®] 20(DC20)



DC 20 Standard Components	Specification
Container	All surfaces insulated and finished with fire-proofed protective vinyl covering. All walls within the decon cell are water tight
Doors	Lockable external door at either end. Steel, fire-rated wide-access doors
Disrobe/ re-robe	Colour-coded undress (dirty) and re-robe (clean) areas
Decon Cell	6-off shower roses included together with 4-off elbow-operated soap dispensers
Flooring	Non-slip floor covering in Disrobe / Re-robe areas giving R10 anti-slip protection
Flooring Tiles	Non-slip rubber flooring tiles
Electrics	Integrated electrical plant room, containing distribution board. Single-phase supply
Electrical Connection	CEEKON-plug 230 V, 32 A
Water	Integrated water plant room, containing combi boiler and ground-level access hatch for water feed
Water Connection	¾" BSP fitting
Waste Water Pump	Sump pump for the safe removal of contaminated waste water. Housed in a box with cover
Waste Water Containment	2-off 500 litre waste water containment bladder tanks & 5m connecting hoses for use from two-off 2" BSP outlets
External Lighting	4-off 150 watt halogen lamps fitted to external walls to give 360° illumination
Internal Lighting	3-off IP67 rated ceiling lights, one in each area
Heating	2-off IP67 oil-fired radiators fitted in disrobe & re-robe areas
Ventilation	2-off mechanical ventilation units in Decon Cell, each rated at 90 m ³ per hr
Security	High security 10 point barrel locks fitted to entry & exit doors
Modesty	Colour-coded internal modesty curtains

What Site Conditions Are required?

- Flat, Concrete surface
- Electrical connection (230V, 63A single phase or 32A 3-phase supply required)
- Pressurised water supply
- Access to Load/Unload by Hiab Vehicle



Optional Items:

- Pull Cord Alarm System
- Seats
- Handrails
- Entry Control Board
- Disrobe/ re-robe kits
- **Anti-Legionella Flushing System:**
 - Can be pre-programmed to flush system pipework at chosen, regular intervals
 - Prevents stagnant water and thus eliminates potential legionella contamination
 - Eradicates requirement for SOP to schedule manual system clean/flush

